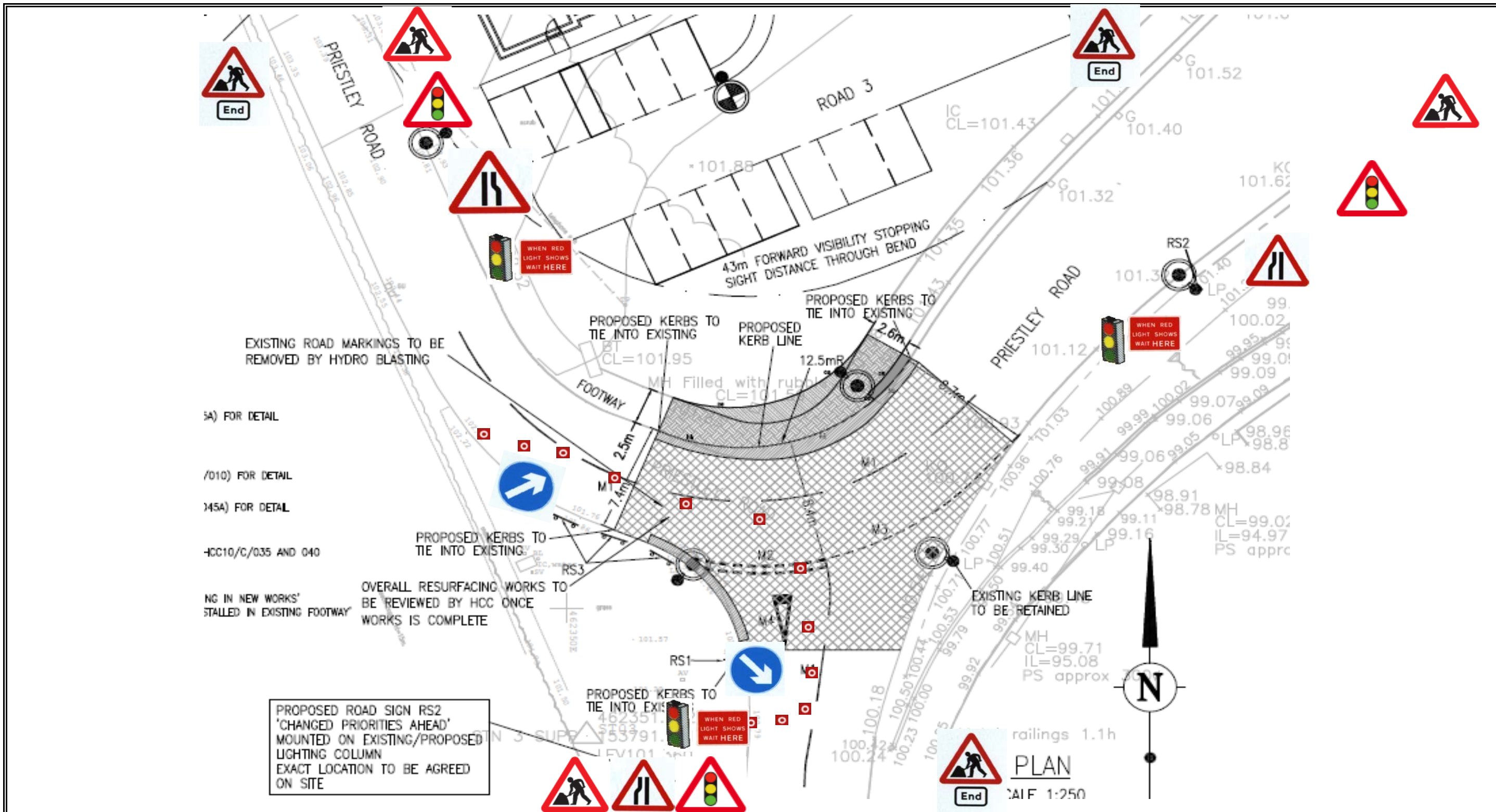
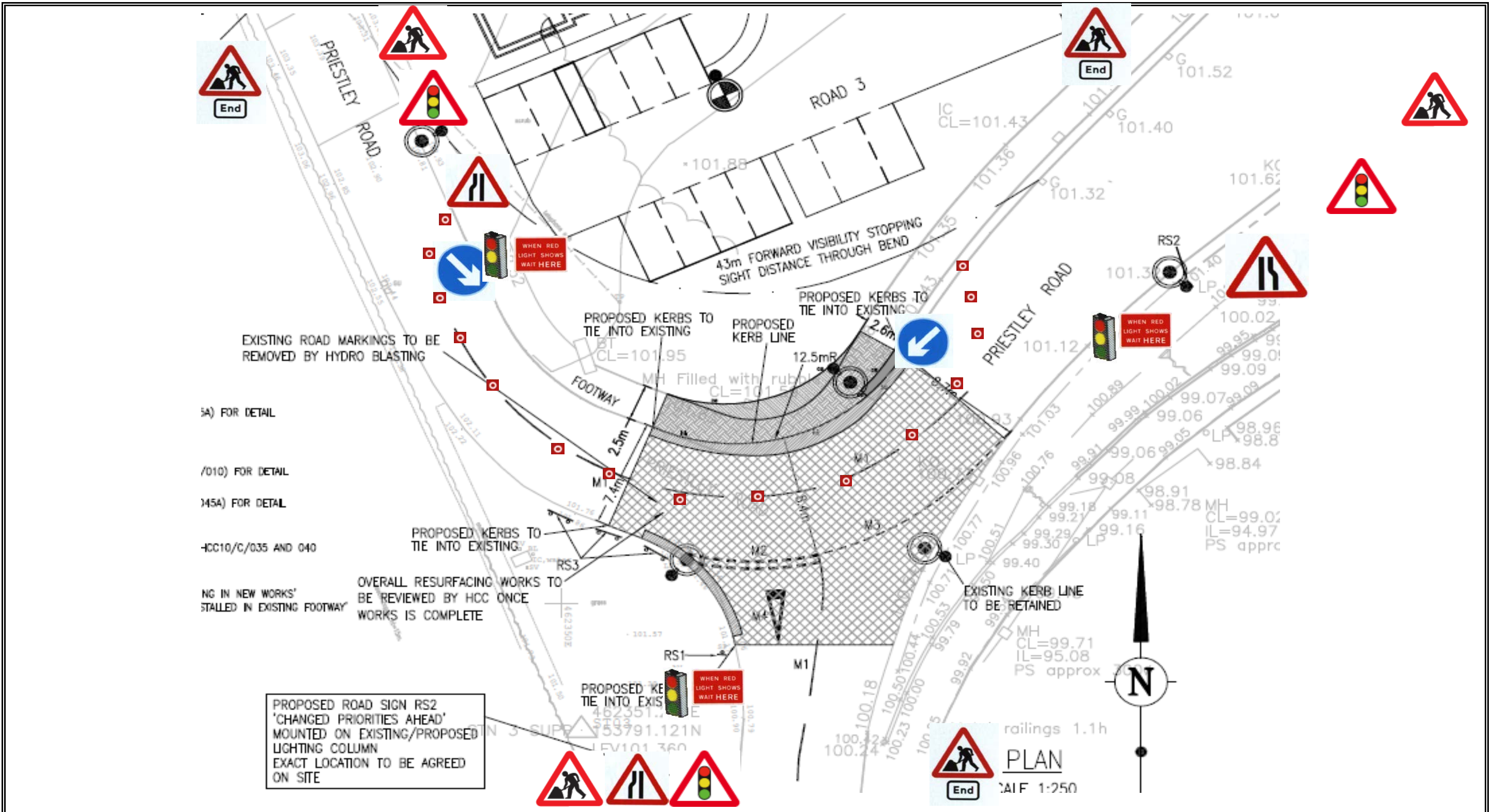


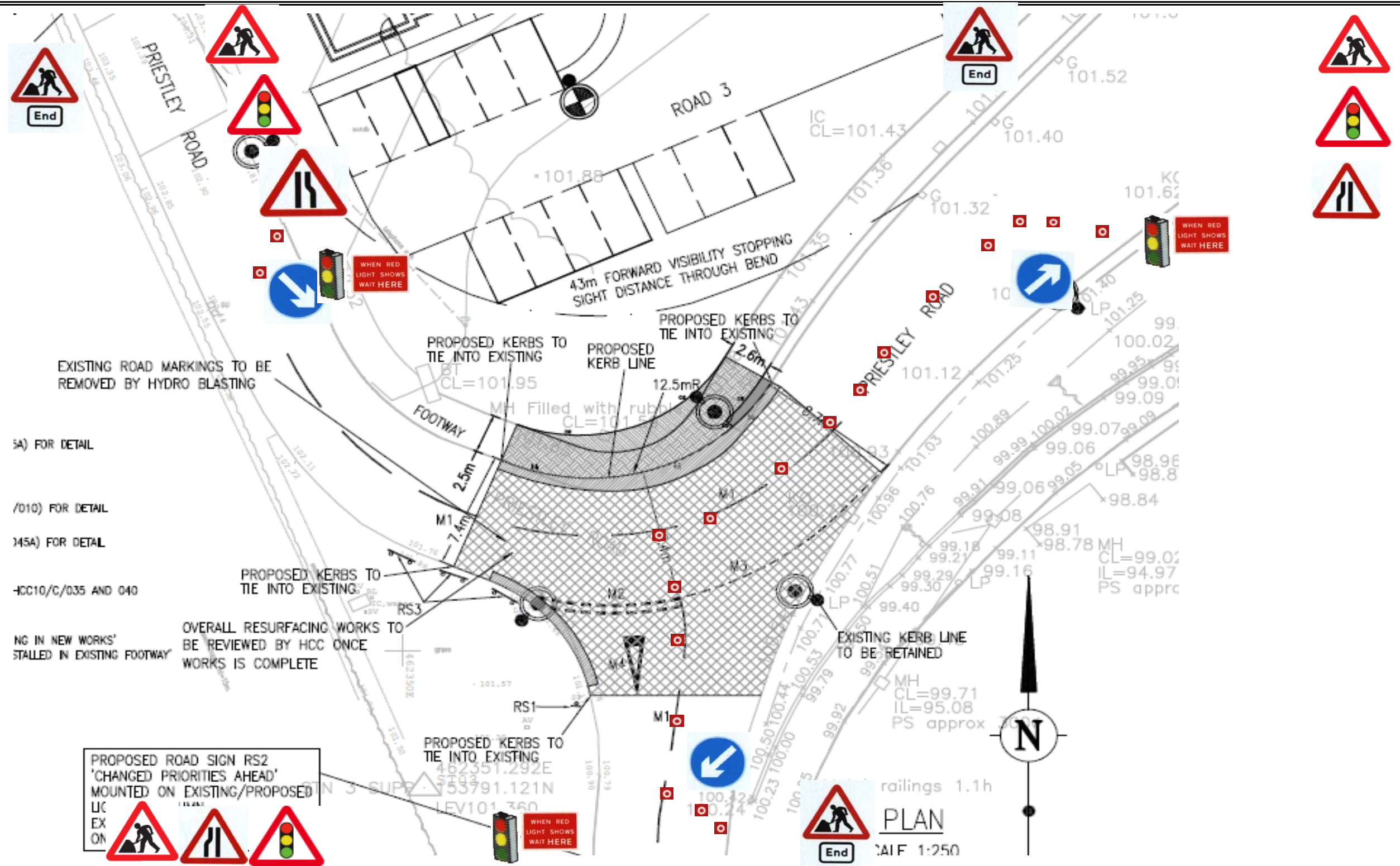
Title	Traffic Management Plans	Number	HC 01
Project	Priestley Road, Basingstoke		
Works	North Side		
1)	Cone Size : 450 mm	6)	Day Time Working Off Peak - Traffic Lights Manually Controlled
2)	Sign Size : 750 mm		
3)	Signs To Be Reflectorised		
4)	Steady Beacons To Be Used At Night		
5)	Cone Spacing 5m		



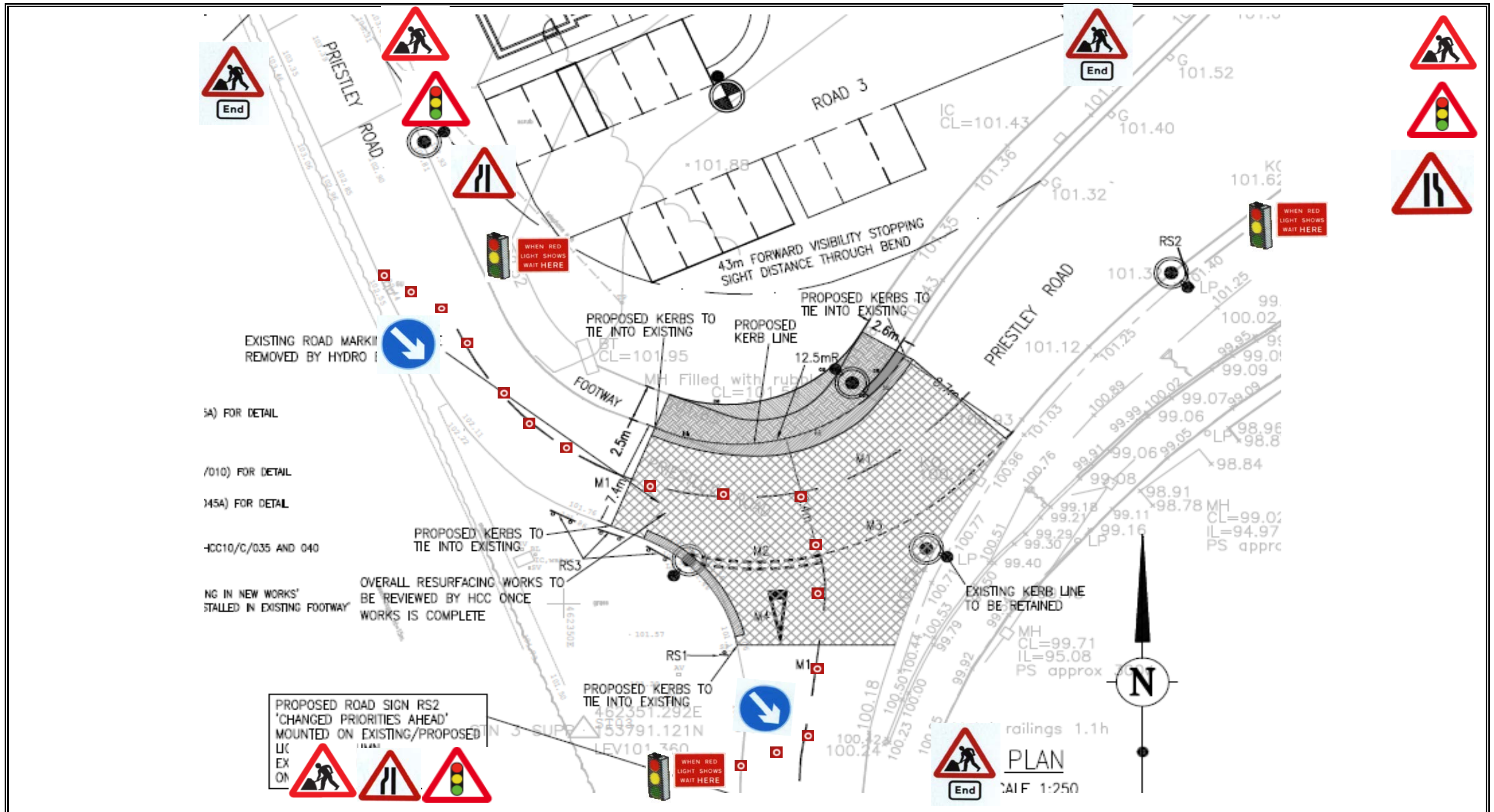
Title	Traffic Management Plans	Number	HC 02
Project	Priestley Road, Basingstoke		
Works	North Side		
1)	Cone Size : 450 mm	6)	Day Time Working Off Peak - Traffic Lights Manually Controlled
2)	Sign Size : 750 mm		
3)	Signs To Be Reflectorised		
4)	Steady Beacons To Be Used At Night		
5)	Cone Spacing 5m		



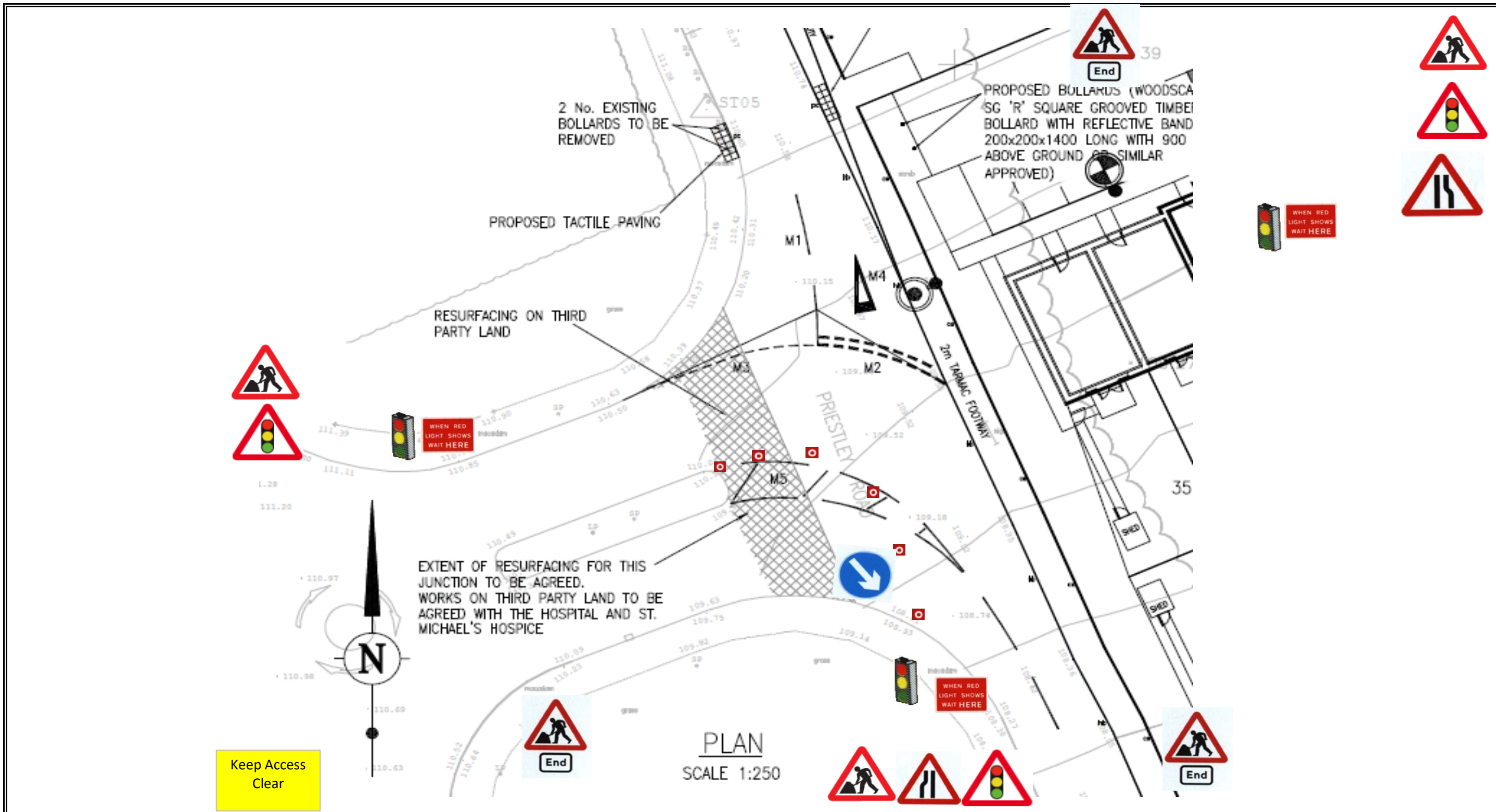
Title	Traffic Management Plans	Number	HC 03
Project	Priestley Road, Basingstoke		
Works	North Side		
1)	Cone Size : 450 mm	6)	Planning & Surfacing Night Time Working 8:00pm - 6:00am Lights Manually Controlled
2)	Sign Size : 750 mm		
3)	Signs To Be Reflectorised		
4)	Steady Beacons To Be Used At Night		
5)	Cone Spacing 5m		



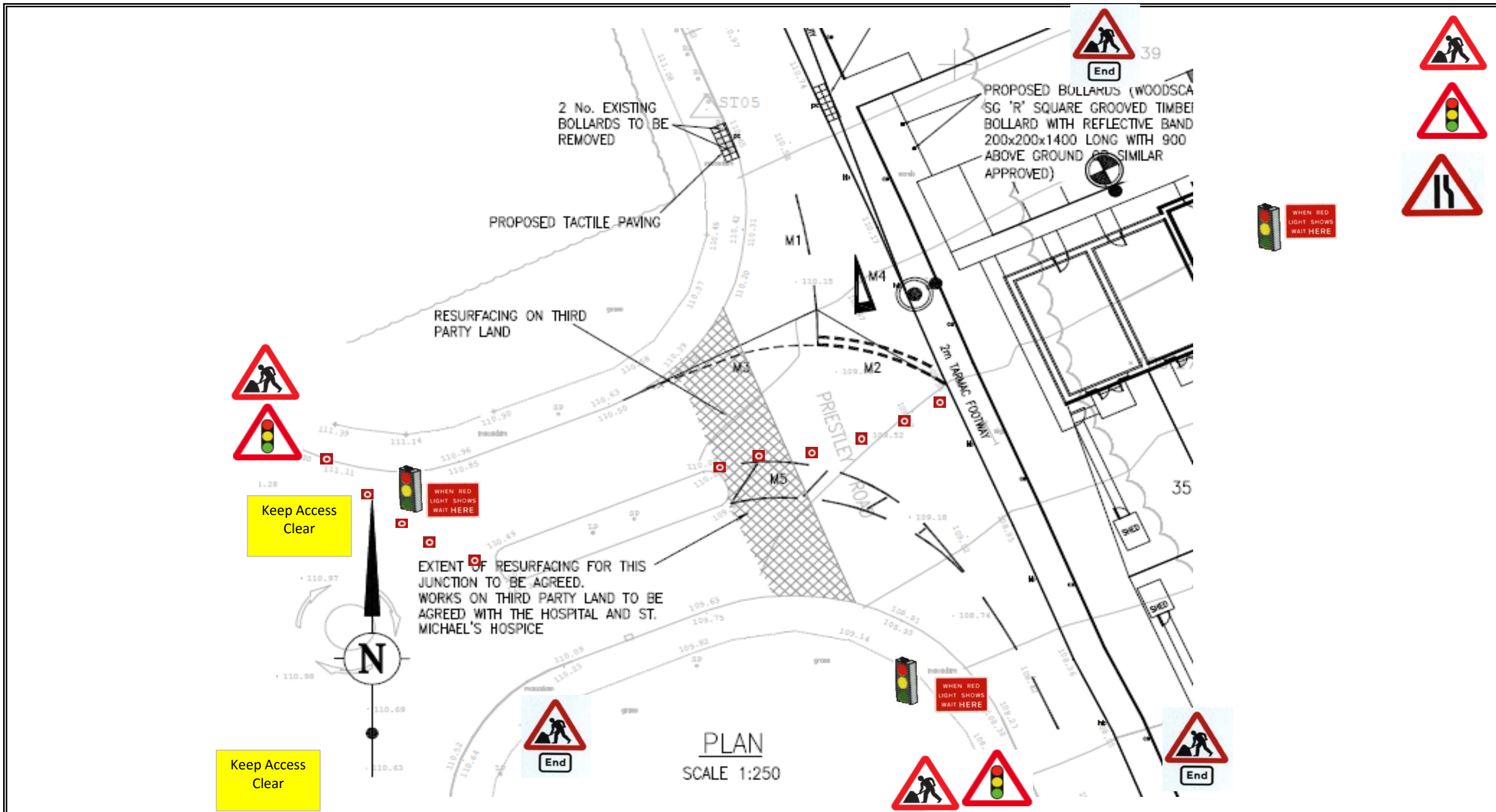
Title	Traffic Management Plans	Number	HC 04
Project	Priestley Road, Basingstoke		
Works	Surfacing		
1)	Cone Size : 450 mm	6)	Planning & Surfacing Night Time Working 8:00pm - 6:00am Lights Manually Controlled
2)	Sign Size : 750 mm		
3)	Signs To Be Reflectorised		
4)	Steady Beacons To Be Used At Night		
5)	Cone Spacing 5m		



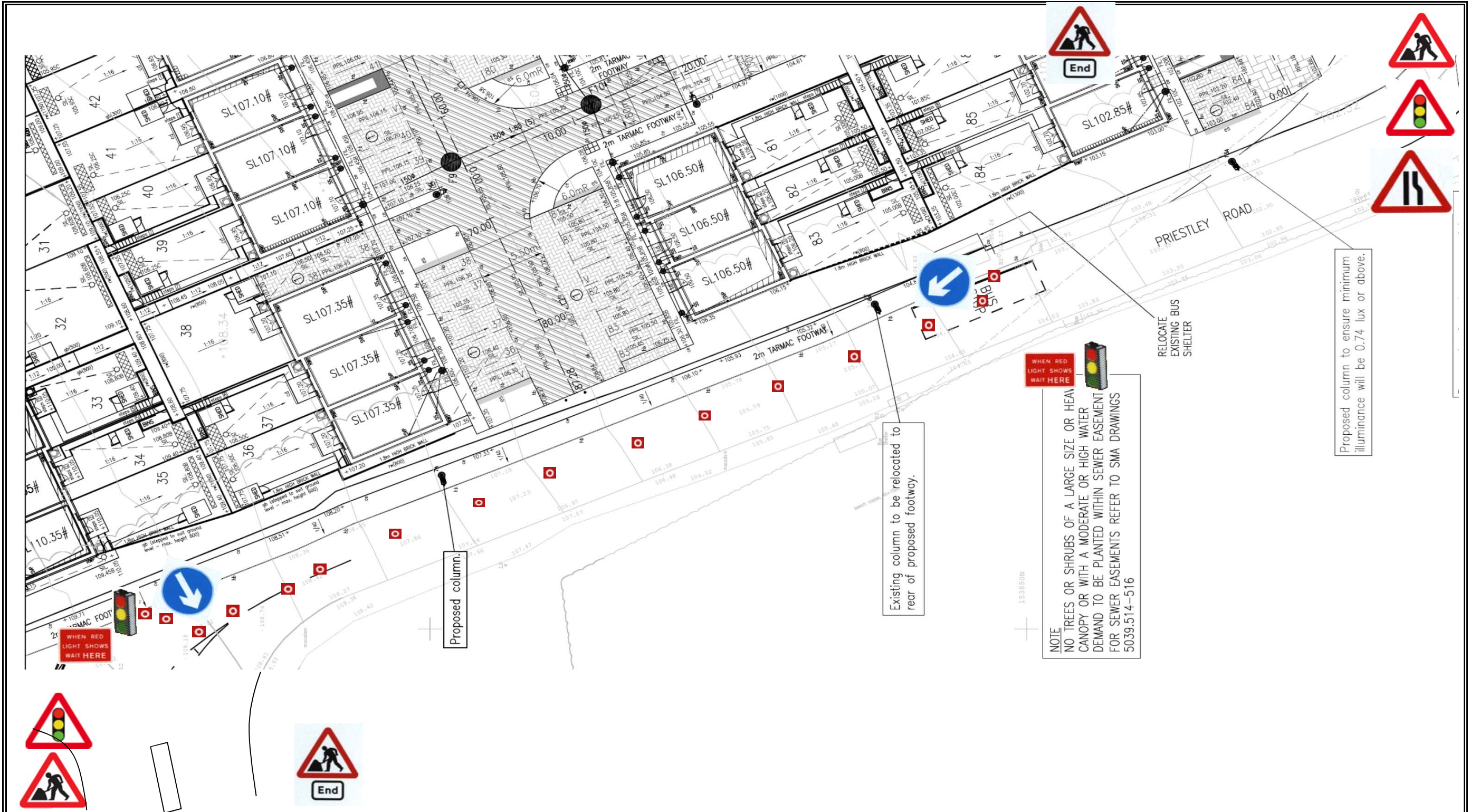
Title	Traffic Management Plans	Number	HC 05
Project	Priestley Road, Basingstoke		
Works	Surfacing		
1)	Cone Size : 450 mm	6)	Planning & Surfacing Night Time Working 8:00pm - 6:00am Lights Manually Controlled
2)	Sign Size : 750 mm		
3)	Signs To Be Reflectorised		
4)	Steady Beacons To Be Used At Night		
5)	Cone Spacing 5m		



Title	Traffic Management Plans	Number	HC 06
Project	Priestley Road, Basingstoke		
Works	Surfacing		
1)	Cone Size : 450 mm	6)	Planning & Surfacing Night Time Working 8:00pm - 6:00am Lights Manually Controlled
2)	Sign Size : 750 mm		
3)	Signs To Be Reflectorised		
4)	Steady Beacons To Be Used At Night		
5)	Cone Spacing 5m		



Title	Traffic Management Plans	Number	HC 07
Project	Priestley Road, Basingstoke		
Works	Surfacing		
1)	Cone Size : 450 mm	6)	Planning & Surfacing Night Time Working 8:00pm - 6:00am Lights Manually Controlled
2)	Sign Size : 750 mm		
3)	Signs To Be Reflectorised		
4)	Steady Beacons To Be Used At Night		
5)	Cone Spacing 5m		



Title	Traffic Management Plans	Number	HC 08
Project	Priestley Road, Basingstoke		
Works	Surfacing		
1)	Cone Size : 450 mm	6)	Works Off Peak 9:30-3:00pm Only. Manully Controlled Traffic Lights all hours of operation. Working length decreased as work proceeds each day
2)	Sign Size : 750 mm		
3)	Signs To Be Reflectorised		
4)	Steady Beacons To Be Used At Night		
5)	Cone Spacing 5m		